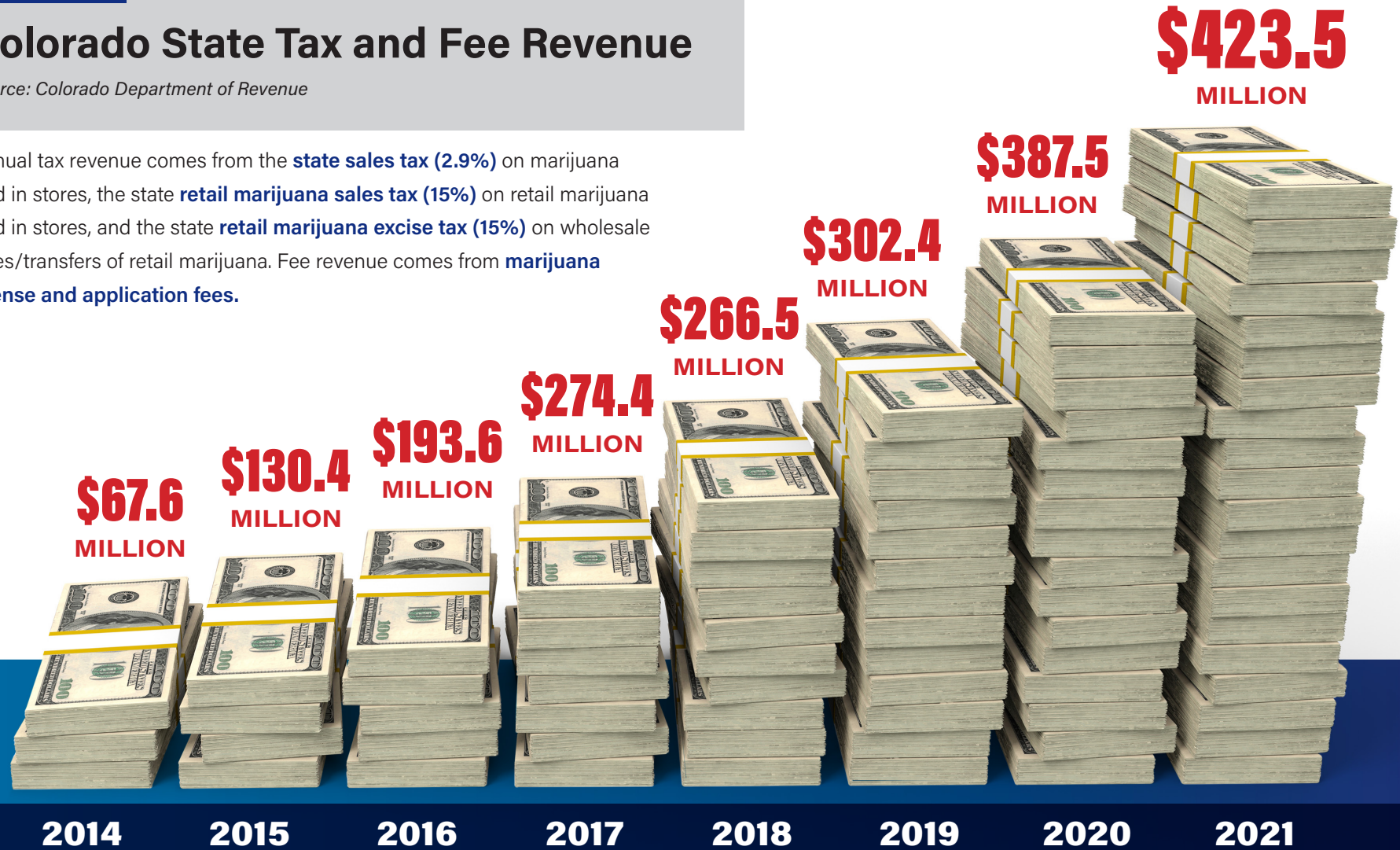




Colorado State Tax and Fee Revenue

Source: Colorado Department of Revenue

Annual tax revenue comes from the **state sales tax (2.9%)** on marijuana sold in stores, the state **retail marijuana sales tax (15%)** on retail marijuana sold in stores, and the state **retail marijuana excise tax (15%)** on wholesale sales/transfers of retail marijuana. Fee revenue comes from **marijuana license and application fees**.



(FEB-DEC)

